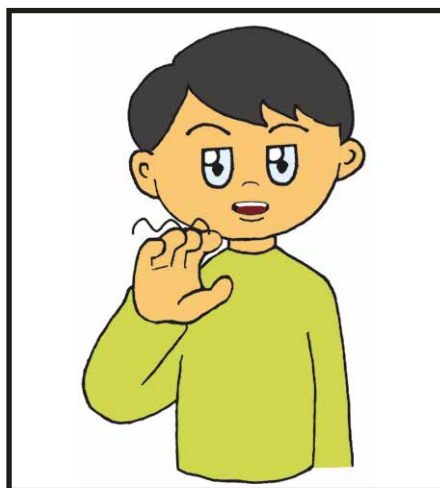
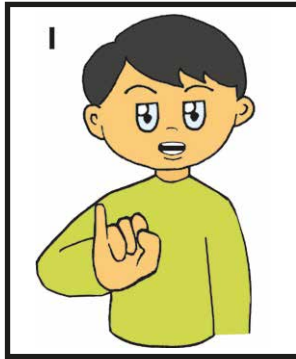
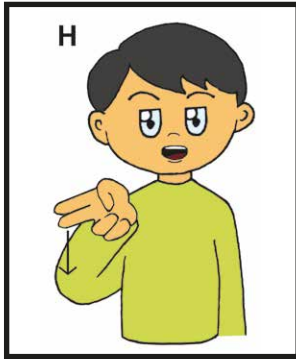
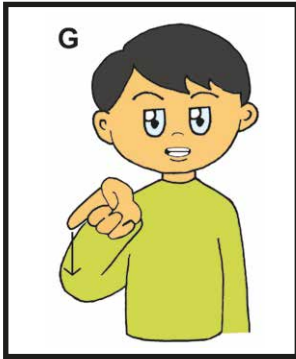
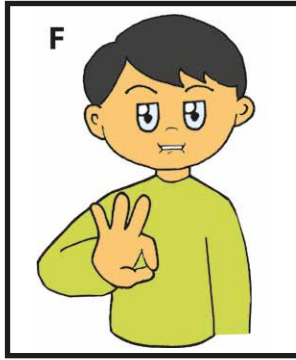
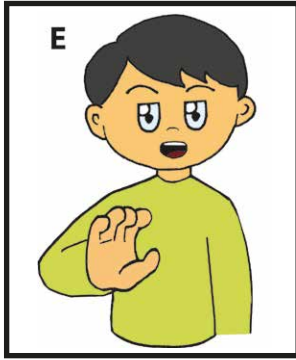
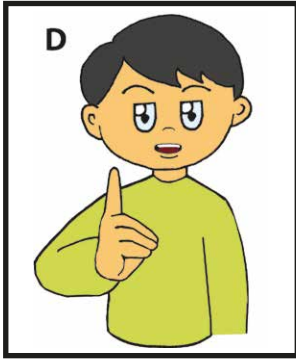
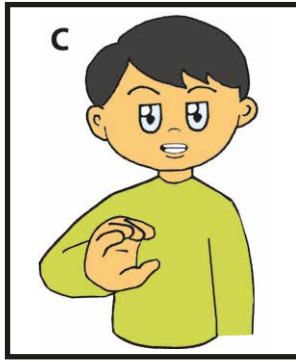
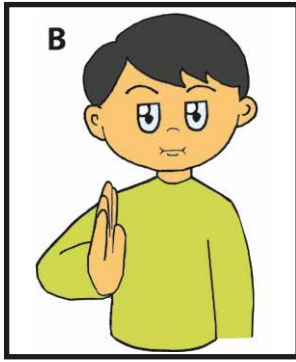
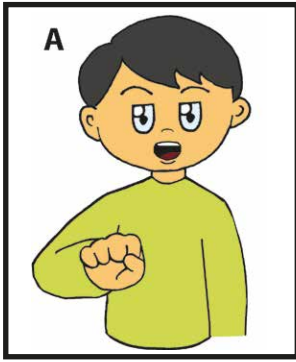
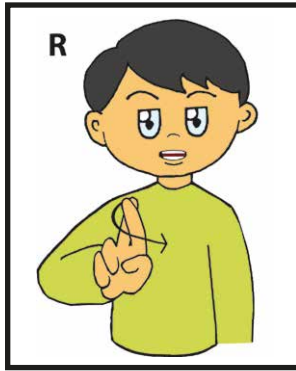
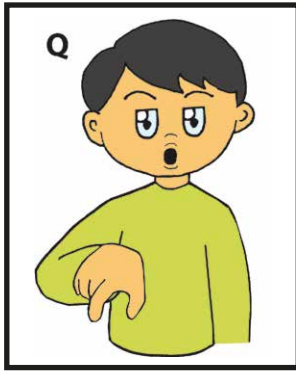
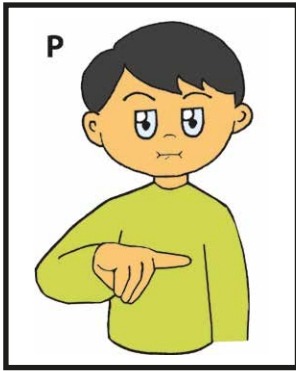
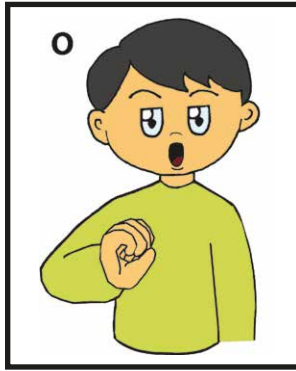
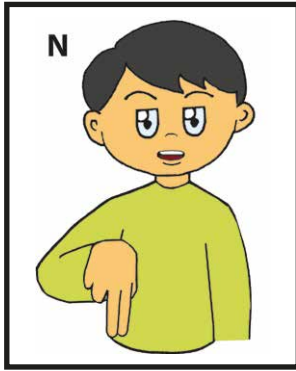
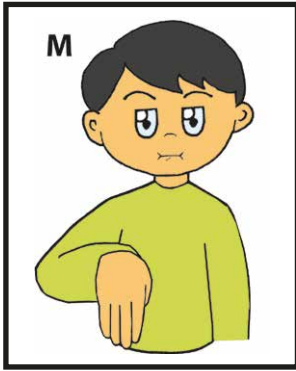
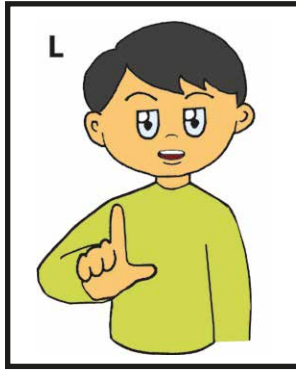
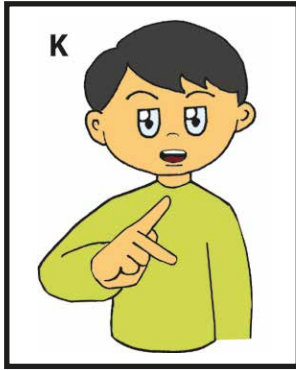
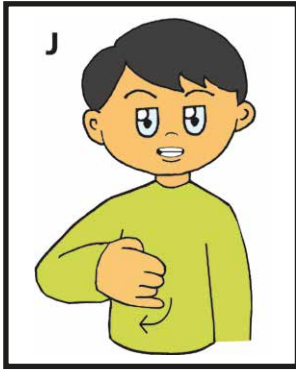
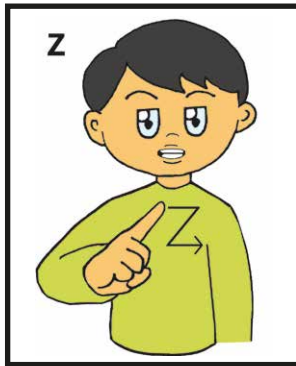
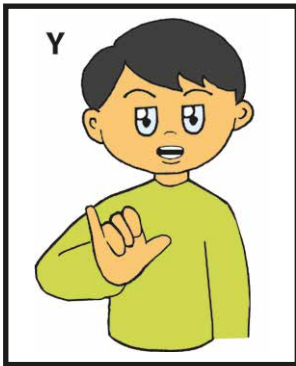
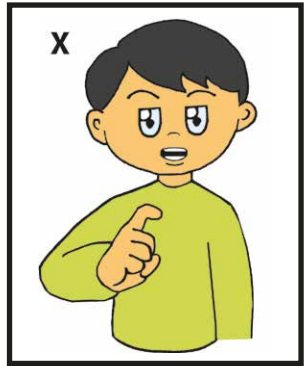
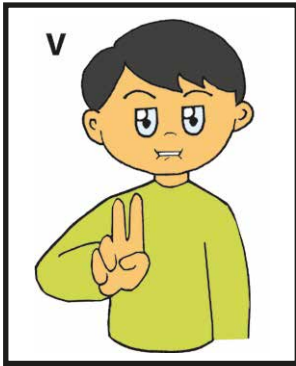
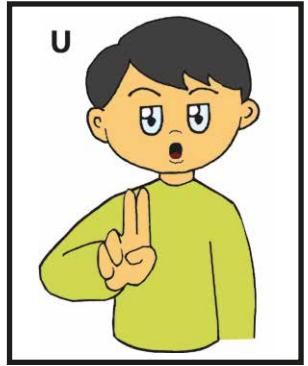
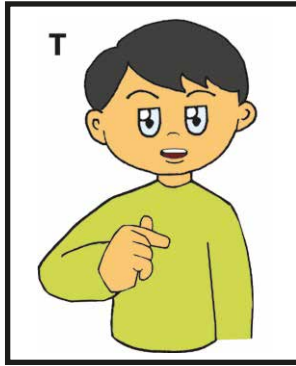
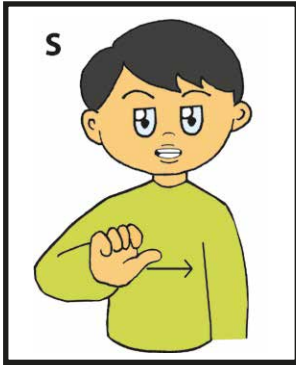


# DATTILOGIA

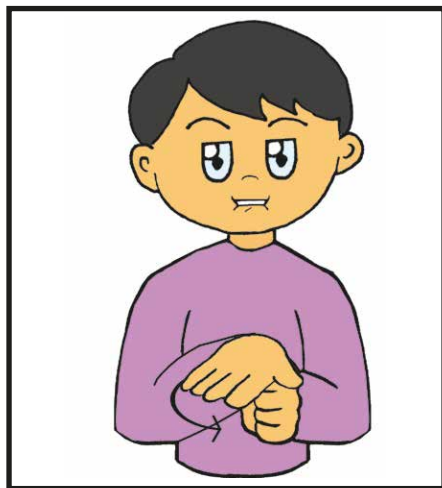




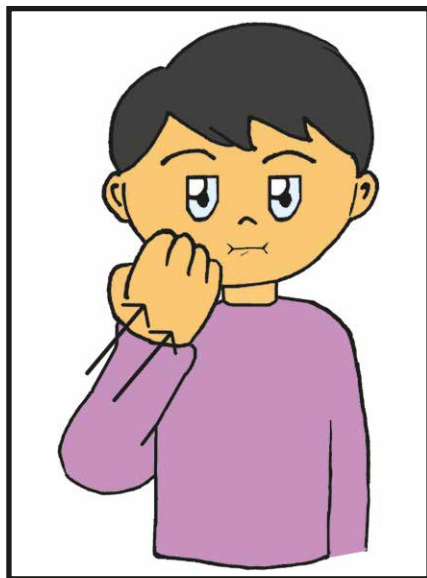
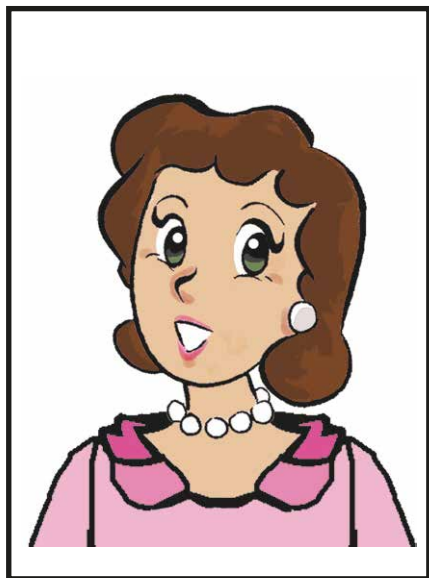




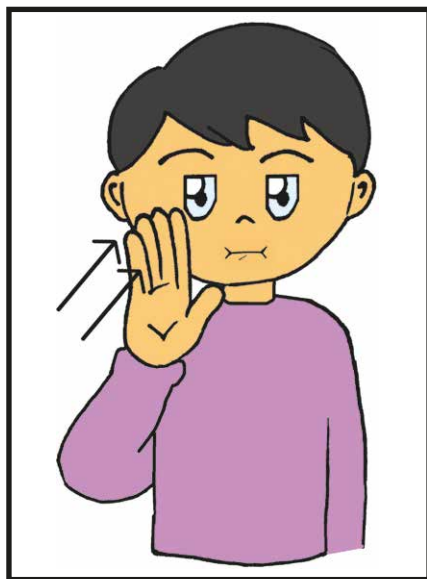
# LA FAMIGLIA



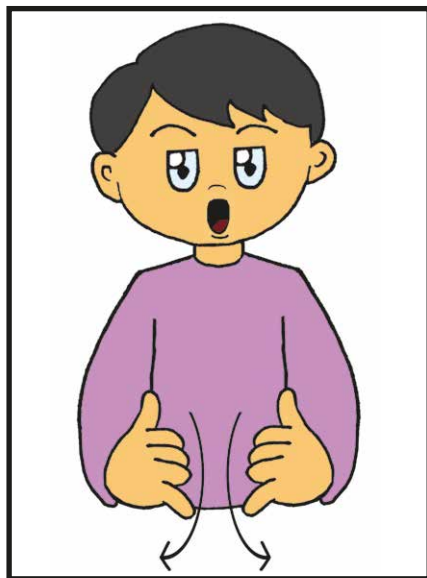
MAMMA



PAPÀ

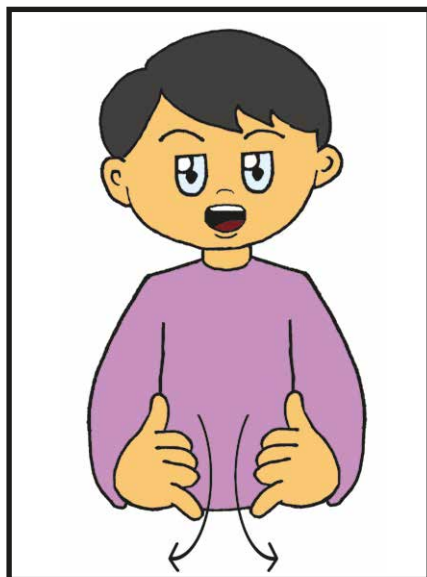
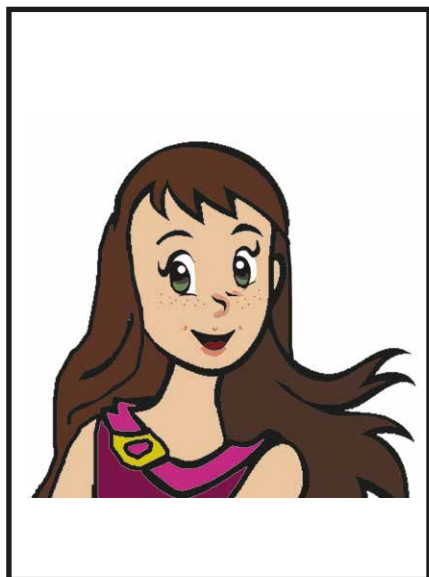


**FIGLIO**

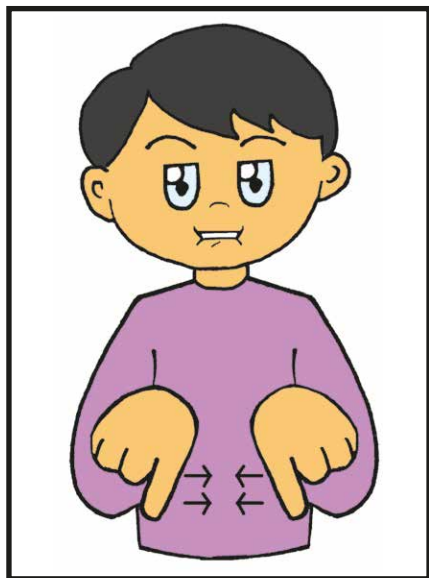


Per distinguere il maschile dal femminile  
il segno rimane invariato cambia solo il labiale

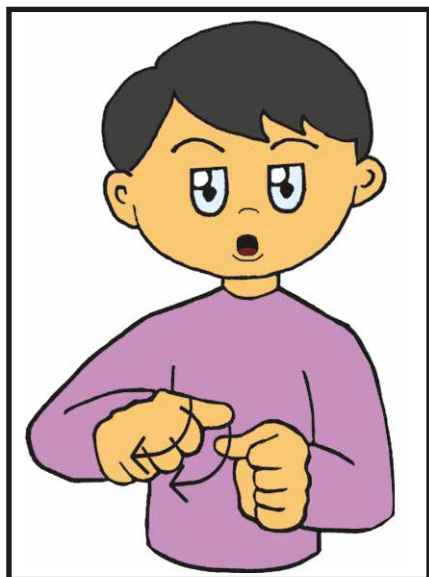
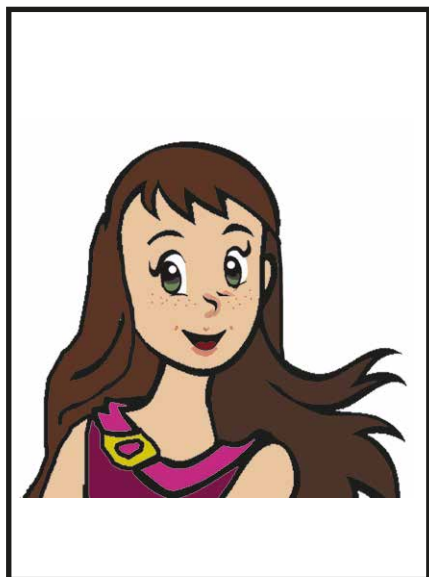
**FIGLIA**



FRATELLO

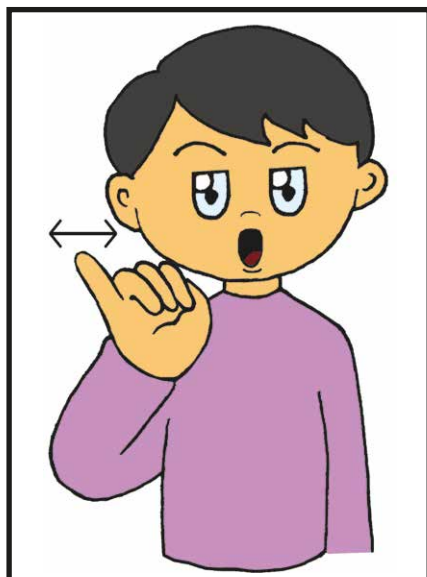


SORELLA





ZIO



Per distinguere il maschile dal femminile

ZIA

il segno rimane invariato cambia solo il labiale

